



The SP350Z UC is a classic example of Finn-Power's side feed crimping machines. These are designed to load angled or bent parts directly into the vertical head design.

This is done without having to pass through the machine's crimping head.



Crimping Range: 10 - 54mm



35 tons of crimping force



Hose size up to 1 1/4"

TECHNICAL SPECS

DESCRIPTION	SP350Z UC
Hose size	1 1/4"
Crimping range \varnothing (mm) ¹	10-54
Die type ²	CC22
Max opening ³ (mm)	+25/+48 ⁴
Master die shoe length (mm)	78
Motor (kW)	3
Crimping force (kN)	350
Number of crimps/hour ⁵	480/2900 ⁶
Dimensions	
width (mm)	630/473
length (mm)	580/653
height (mm)	863/710
Weight (kg)	410/100

STANDARD DIE SETS

CODE	CRIMPING DIAMETER (MM)	LENGTH (MM)
18315/10	10.0 - 12.0	50
18315/12	12.0 - 14.0	50
18315/14	14.0 - 16.0	50
18315/16	16.0 - 19.0	50
18315/19	19.0 - 23.0	50
18315/23	23.0 - 27.0	50
18315/27	27.0 - 31.0	50
18315/31	31.0 - 36.0	50
18315/36	36.0 - 41.0	50
18315/41	41.0 - 47.0	50
18315/47	47.0 - 54.0	50

1. With standard dies. Crimping range can be increased with special dies

2. See table for standard die set data

3. Add this value to minimum crimping diameter of the die set used. The result is the maximum opening of the machine with die set in place.

4. Die travel / feeding channel

5. Theoretical with 1/2" hose \varnothing 10 mm

6. Full cycle / 10 mm cycle

OPCIONAL EXTRAS



LONG LIFE
Auto greasing system



SPEED
Quick change and QC Tool base



HANDS FREE
Foot pedal



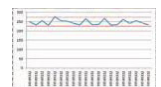
EASY POSITIONING
Mechanical back stop device



UC1
Pressure crimping



UC2
Multi-step crimping



UC3
Data report

UC CONTROL