

SP1200S UC

PRENSADORA | CRIMPING

FINN-POWER
Crimping since 1973



Side feed crimping machine for elaborately shaped and angled hose assemblies.

Hose assemblies in the automotive industry are often comprised of elaborate shapes and sharp bends. The traditional pass through head structure of most hose crimping machines does not accommodate such assemblies.

This is why Finn-Power has designed a side feed crimping machine, which allows the hose to be fed from the side. This innovative structure makes crimping of any odd shaped hose assemblies easier and more accurate than ever before.



Crimping Range: 10 - 54mm



120 tons of crimping force



Hose size up to 1 1/4"

TECHNICAL SPECS

DESCRIPTION	SP1200 UC
Hose size	1 1/4"
Crimping range \varnothing (mm) ¹	10-54
Die type ²	CC22
Max opening ³ (mm)	+25/+63 ⁴
Master die shoe length (mm)	78
Motor (kW)	4
Crimping force (kN)	1200
Number of crimps/hour ⁵	420/2500 ⁶
Dimensions	
width (mm)	473
length (mm)	653
height (mm)	710
Weight (kg)	850/100

STANDARD DIE SETS

CODE	CRIMPING DIAMETER (MM)	LENGTH (MM)
18315/10	10.0 - 12.0	50
18315/12	12.0 - 14.0	50
18315/14	14.0 - 16.0	50
18315/16	16.0 - 19.0	50
18315/19	19.0 - 23.0	50
18315/23	23.0 - 27.0	50
18315/27	27.0 - 31.0	50
18315/31	31.0 - 36.0	50
18315/36	36.0 - 41.0	50
18315/41	41.0 - 47.0	50
18315/47	47.0 - 54.0	50

1. With standard dies. Crimping range can be increased with special dies

2. See table for standard die set data

3. Add this value to minimum crimping diameter of the die set used. The result is the maximum opening of the machine with die set in place.

4. Die travel / feeding channel

5. Theoretical with 1/2" hose \varnothing 10 mm

6. Full cycle / 10 mm cycle

OPCIONAL EXTRAS



LONG LIFE

Auto greasing system



SPEED

Quick change and QC Tool base



HANDS FREE

Foot pedal



EASY POSITIONING

Mechanical back stop device



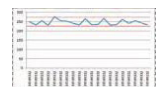
UC1

Pressure crimping



UC2

Multi-step crimping



UC3

Data report

UC CONTROL