



Finn-Power SP100 series of side feed crimping machines are designed for crimping especially short and bent fittings- feature that makes them so ideal for crimping for example automotive hose assemblies.

SP100 model has slim crimping head and short master dies. These features enable crimping with shorter die sets. ideal for crimping for example automotive hose assemblies.



Crimping Range: 10 - 46mm



10 tons of crimping force



Hose size up to 1"

TECHNICAL SPECS

DESCRIPTION	SP100 UC
Hose size	1"
Crimping range \varnothing (mm) ¹	10-46
Die type ²	SP100
Max opening ³ (mm)	+11/+62 ⁴
Master die shoe length (mm)	40
Motor (kW)	3
Crimping force (kN)	100
Number of crimps/hour ⁵	520/1800 ⁶
Dimensions	
width (mm)	766
length (mm)	814
height (mm)	1670
Weight (kg)	383

STANDARD DIE SETS

CODE	CRIMPING DIAMETER (MM)	LENGTH (MM)
701817/10	10.0 - 12.0	40
701817/12	12.0 - 14.0	40
701817/14	14.0 - 16.0	40
701817/16	16.0 - 19.0	40
701817/19	19.0 - 23.0	40
701817/23	23.0 - 27.0	40
701817/27	27.0 - 31.0	40
701817/31	31.0 - 36.0	40
701817/36	36.0 - 41.0	40
701817/41	41.0 - 47.0	40
701817/47	47.0 - 54.0	40

1. With standard dies. Crimping range can be increased with special dies

2. See table for standard die set data

3. Add this value to minimum crimping diameter of the die set used. The result is the maximum opening of the machine with die set in place.

4. Die travel / feeding channel

5. Theoretical with 1/2" hose \varnothing 10 mm

6. Full cycle / 10 mm cycle

OPCIONAL EXTRAS



LONG LIFE

Auto greasing system



SPEED

Quick change and QC Tool base



HANDS FREE

Foot pedal



EASY POSITIONING

Mechanical back stop device



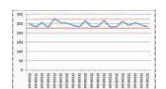
UC1

Pressure crimping



UC2

Multi-step crimping



UC3

Data report

UC CONTROL