



FP20 UC crimper can be operated by push-button, foot pedal (option), back stop device or using semi-automatic function.

FP20 UC is supplied with a storage locker and Quick Change tool as standard. This feature allows the whole die set to be changed in one easy operation and stored the dies in complete set



Crimping Range : 10 - 61mm



150 tons of crimping force



Hose size up to 1 1/2"

TECHNICAL SPECS

DESCRIPTION	FP20 UC
Hose size	1 1/2"
Crimping range \emptyset (mm)	10-61
Die type ¹	FP20
Max opening ² (mm)	+68
Master die shoe length (mm)	97
Motor (kW)	3
Standard Voltages (V) ³	230 or 400
Crimping force (kN)	1500
Number of crimpings/hour ⁴	150
Noise level (dB(A))	68
Protection class	IP54
Size	
width (mm)	713
length (mm)	705
height (mm)	1059
Weight without oil (kg)	600

STANDARD DIE SETS*

CODE	CRIMPING DIAMETER (MM)	LENGTH (MM)	CODE	CRIMPING DIAMETER (MM)	LENGTH (MM)
FP20-10	10.0 - 12.0	55	FP20-27	27.0 - 31.0	75
FP20-12	12.0 - 14.0	55	FP20-31	31.0 - 36.0	75
FP20-14	14.0 - 16.0	55	FP20-36	36.0 - 41.0	75
FP20-16	16.0 - 19.0	75	FP20-41	41.0 - 47.0	75
FP20-19	19.0 - 22.0	75	FP20-47	47.0 - 54.0	85
FP20-23	23.0 - 27.0	75	FP20-54	54.0 - 61.0	85

*In addition to the standard dies, a wide range of special die sets for different diameter, length and form is available.

OPCIONAL EXTRAS



HANDS FREE
Foot pedal



EASY POSITIONING
Mechanical back stop device



SPACE SAVING
Die set rack



LONG LIFE
Auto greasing system

UC CONTROL



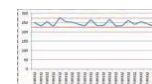
UC1

Pressure crimping



UC2

Multi-step crimping



UC3

Data report

1. See table for standard die set data
2. Min. crimping dia of die set added by table value
3. Other voltages upon request
4. Theoretical with 1/2" hose \emptyset 10 mm