

# FP175 UC

## PRENSADORA | CRIMPING

**FINN-POWER**  
Crimping since 1973



The FP175 UC is one of “Finn-Power’s Titans”, and is an ideal choice when your operation requires crimping of very large hoses or reduction of big pipes.

They can be used also for connecting parts requiring extremely high forces. FP175 is the biggest and strongest standard-made crimping machine in the market.



Crimping Range: 10 - 320mm



830 tons of crimping force



Hose size up to 10”

### TECHNICAL SPECS

DESCRIPTION	FP175 UC
Crimping range $\varnothing$ (mm)	10-320
Crimping force (kN)	8300
Number of crimps/hour <sup>2</sup>	2000
Hose size ID (inch)	10”
Max opening (mm) <sup>1</sup>	+155
Master die shoe length (mm)	220
Controls	IS/VIS
Motor (kW)	7.5
Standard Voltages (V) <sup>3</sup>	230/400
Noise level (dBA)	69
Protection class	IP54
Dimensions / crimping unit	
length (mm)	936
width (mm)	1200
height (mm)	2080
Weight (kg)	4400
Dimensions / hydraulic unit	
length (mm)	1065
width (mm)	640
height (mm)	1185
Weight (kg)	250

### STANDARD DIE SETS\*

FP160/FP165 special die sets used with adapter dies

CODE	CRIMPING DIAMETER (MM)	LENGTH (MM)
160-84	84.0 - 92.0	116
160-92	92.0 - 100.0	116
160-100	100.0 - 108.0	116
160-108	108.0 - 116.0	116
160-116	116.0 - 126.0	116
160-126	126.0 - 136.0	116
160-136	136.0 - 146.0	116
160-146	146.0 - 156.0	116
160-156	156.0 - 166.0	116
160-166	166.0 - 178.0	116
160-178	178.0 - 190.0	116
160-190	190.0 - 202.0	116

FP170/FP175 special die sets used without adapter dies

CODE	CRIMPING DIAMETER (MM)	LENGTH (MM)
170-205	205.0 - 220.0	220
170-220	220.0 - 235.0	220
170-235	235.0 - 250.0	220
170-250	250.0 - 270.0	220
170-270	270.0 - 290.0	220
170-290	290.0 - 320.0	220

### OPCIONAL EXTRAS



**CONVENIENCE**  
Adjustable control unit



**LONG LIFE**  
Auto greasing system



**EASY HANDLING**  
Remote control unit

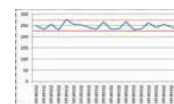
### UC CONTROL



**UC1**  
Pressure crimping



**UC2**  
Multi-step crimping



**UC3**  
Data report

\*In addition to FP160/FP165 and FP170/FP175 die sets, a wide range of special die sets from 84 mm up to 360 mm is available.

1. Min. crimping dia of die set added by table value

2. Theoretical with 1/2" hose  $\varnothing$  10 mm

3. Other voltages on request